

NESTED PURLIN DETAILS

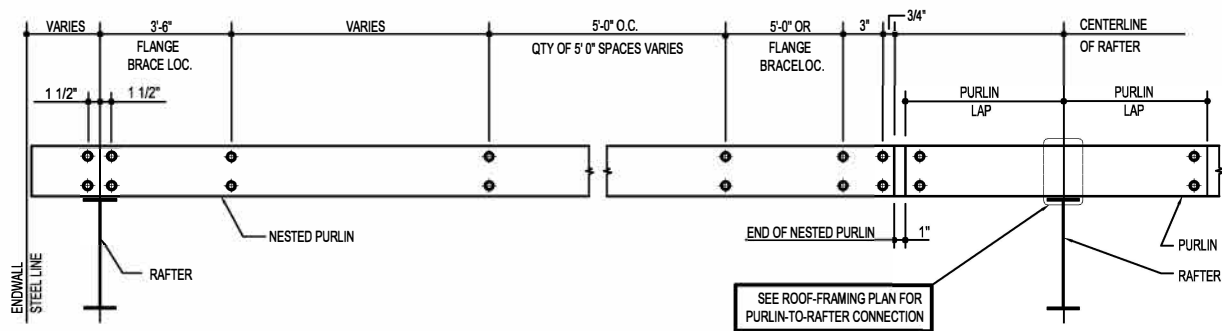
BM0010 - ENDBAY NESTED PURLIN - DOES NOT CONTINUE THROUGH LAP

BM0020 - ENDBAY NESTED PURLIN - CONTINUOUS THROUGH LAP

BM0030 - INTERIOR NESTED PURLIN - DOES NOT CONTINUE THROUGH LAP

BM0010 - ENDBAY NESTED PURLIN - DOES NOT CONTINUE THROUGH LAP

[Download the DWG file by clicking here.](#)



ENDBAY NESTED PURLIN - DOES NOT CONTINUE THROUGH LAP

BOLTS REQUIRED ONLY AS SHOWN, NOT AT ALL HOLES
USE 1/2"Ø A307 BOLTS (MK. H0500) AND NUTS (MK. H0400) AT ALL BOLTED CONNECTIONS SHOWN

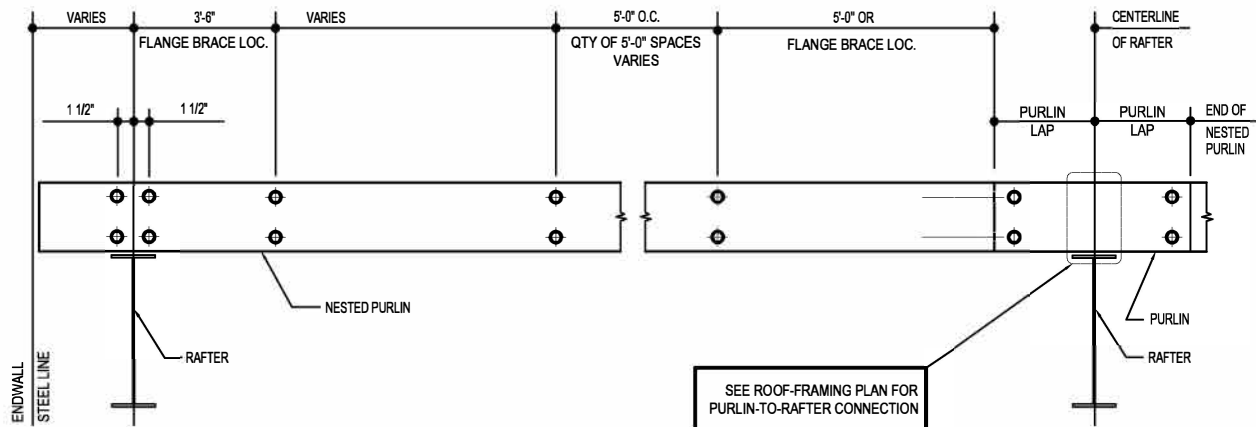
BM0010

Detailer Notes:

- 1) N/A

BM0020 - ENDBAY NESTED PURLIN - CONTINUOUS THROUGH LAP

[Download the DWG file by clicking here.](#)



ENDBAY NESTED PURLIN - CONTINUOUS THROUGH LAP

BOLTS REQUIRED ONLY AS SHOWN, NOT AT ALL HOLES
USE 1/2"Ø A307 BOLTS (MK. H0500) AND NUTS (MK. H0400) AT ALL BOLTED CONNECTIONS SHOWN

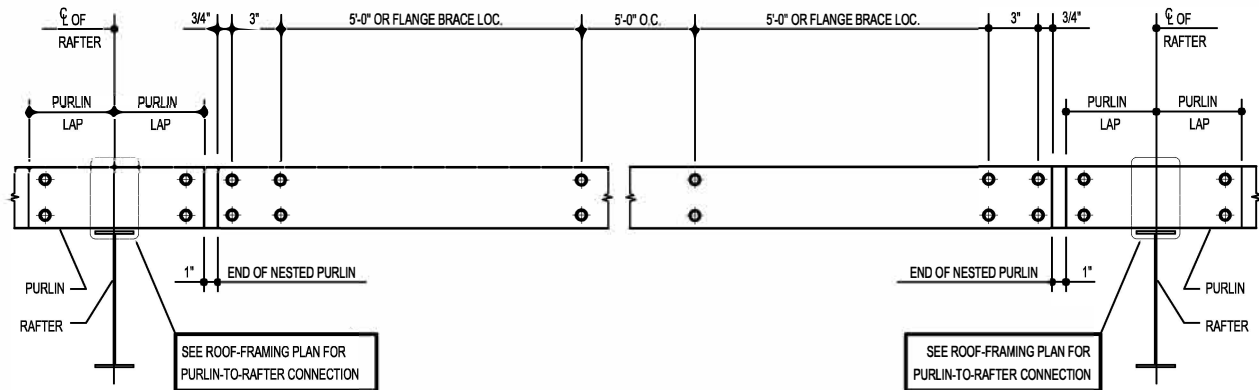
BM0020

Detailer Notes:

- 1) N/A

BM0030 - INTERIOR NESTED PURLIN - DOES NOT CONTINUE THROUGH LAP

[Download the DWG file by clicking here.](#)



INTERIOR NESTED PURLIN - DOES NOT CONTINUE THROUGH LAP

BOLTS REQUIRED ONLY AS SHOWN, NOT AT ALL HOLES
USE 1/2"Ø A307 BOLTS (MK. H0500) AND NUTS (MK. H0400) AT ALL BOLTED CONNECTIONS SHOWN

BM0030

Detailer Notes:

- 1) N/A